

About SM2259XT2 firmware upgrade instructions

Note:

SSD with the prompt "this firmware version does not need to be upgraded" cannot be upgraded. It needs to be upgraded with mptool temporarily.

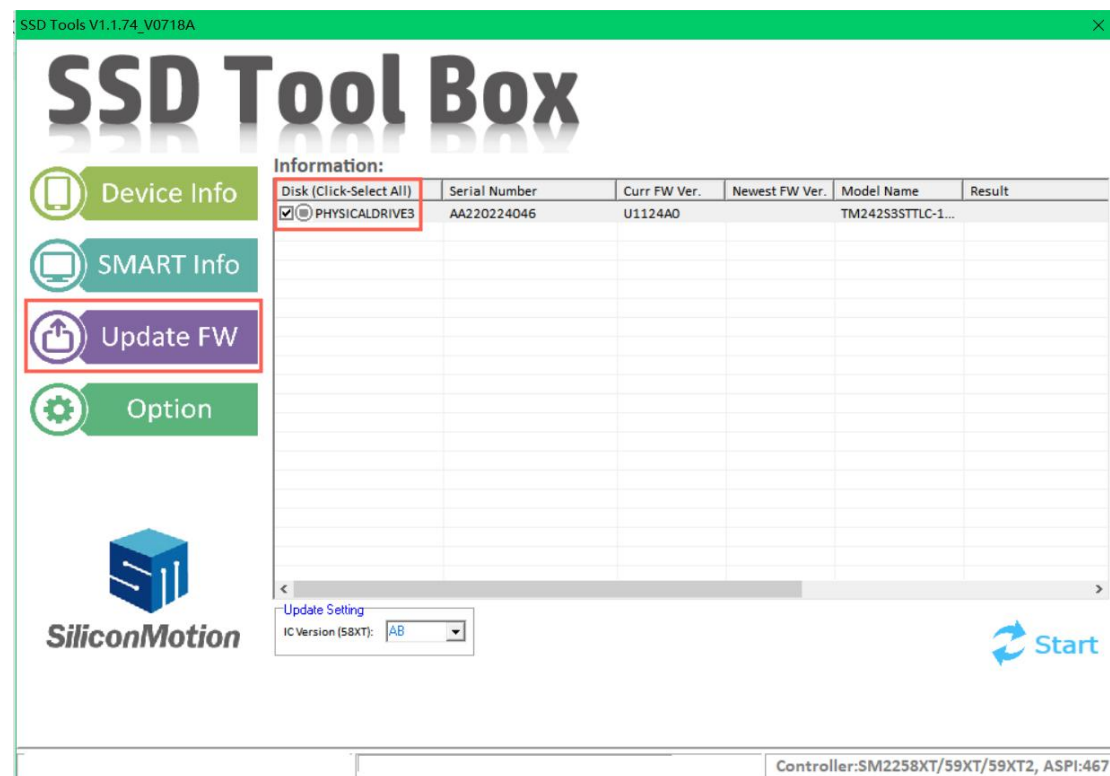
1.Upgrade with FFU tool

Step 1: Power up the SSD that needs to be upgraded

Step 2:Open FFU tool(SSD Tool Box)

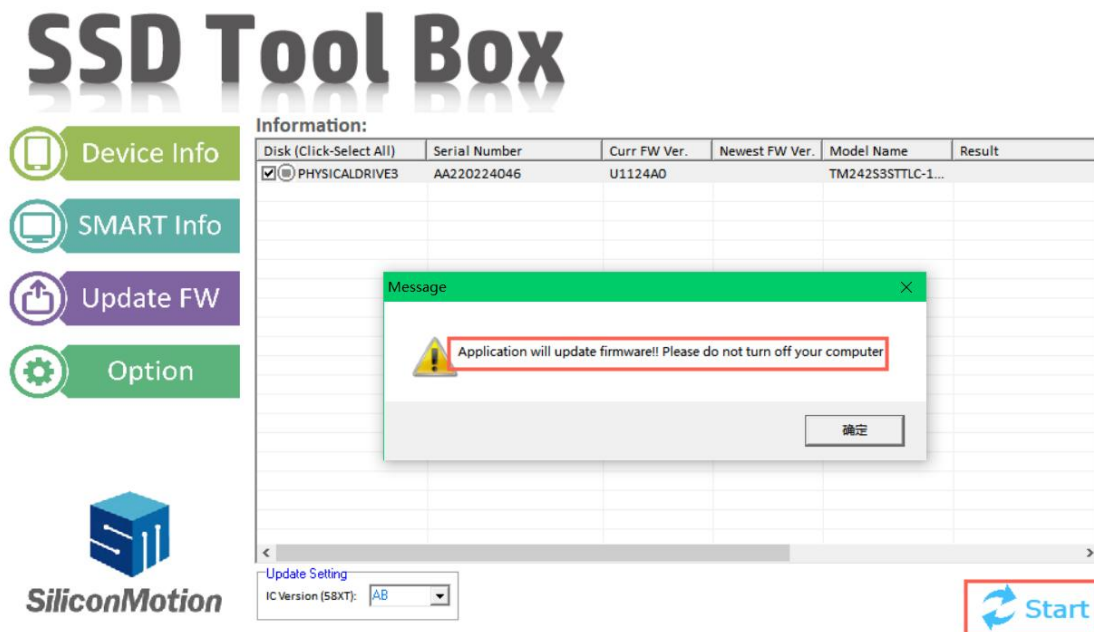
名称	修改日期	类型	大小
Firmware	2022/7/19 18:36	文件夹	
SM2258XT	2022/7/19 18:36	文件夹	
SM2259XT	2022/7/19 18:36	文件夹	
SM2259XT2	2022/7/19 18:36	文件夹	
Tables	2022/7/19 18:36	文件夹	
Setting	2022/7/19 18:40	配置设置	2 KB
SSDToolBox	2022/7/18 17:03	应用程序	4,737 KB

Step 3:Click Update FW,Then select the SSD to be upgraded.



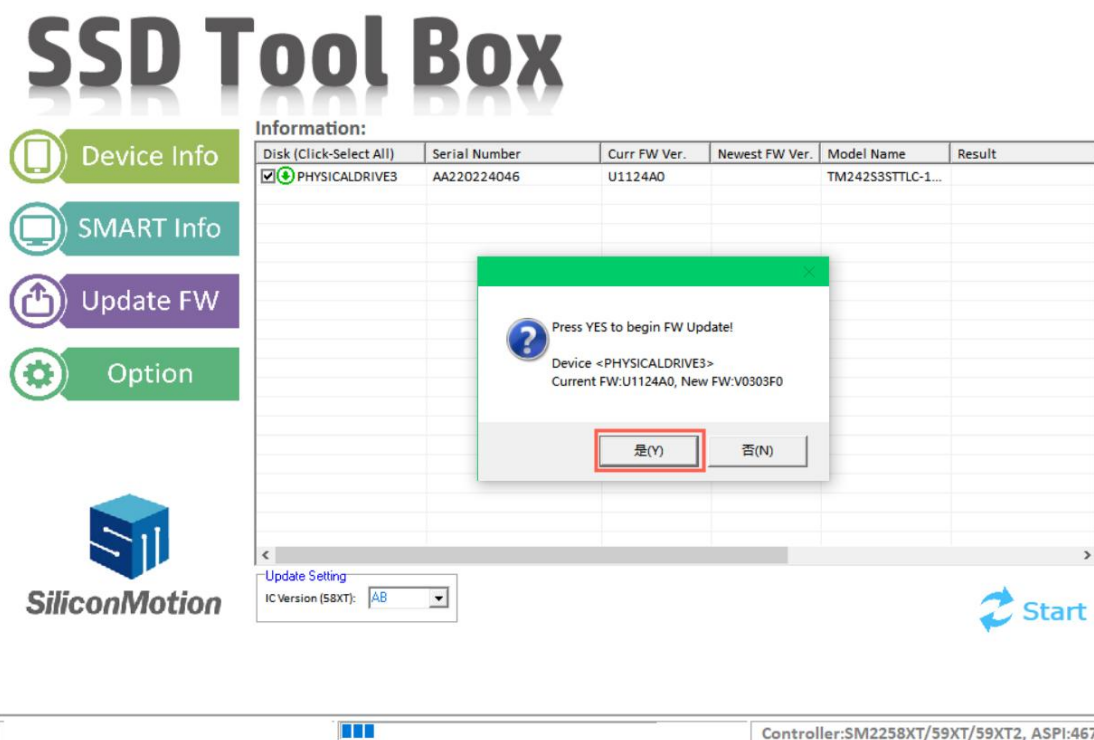
Step 4:Click Start,A dialog box will pop up, and then click “确定”

SSD Tools V1.1.74_V0718A

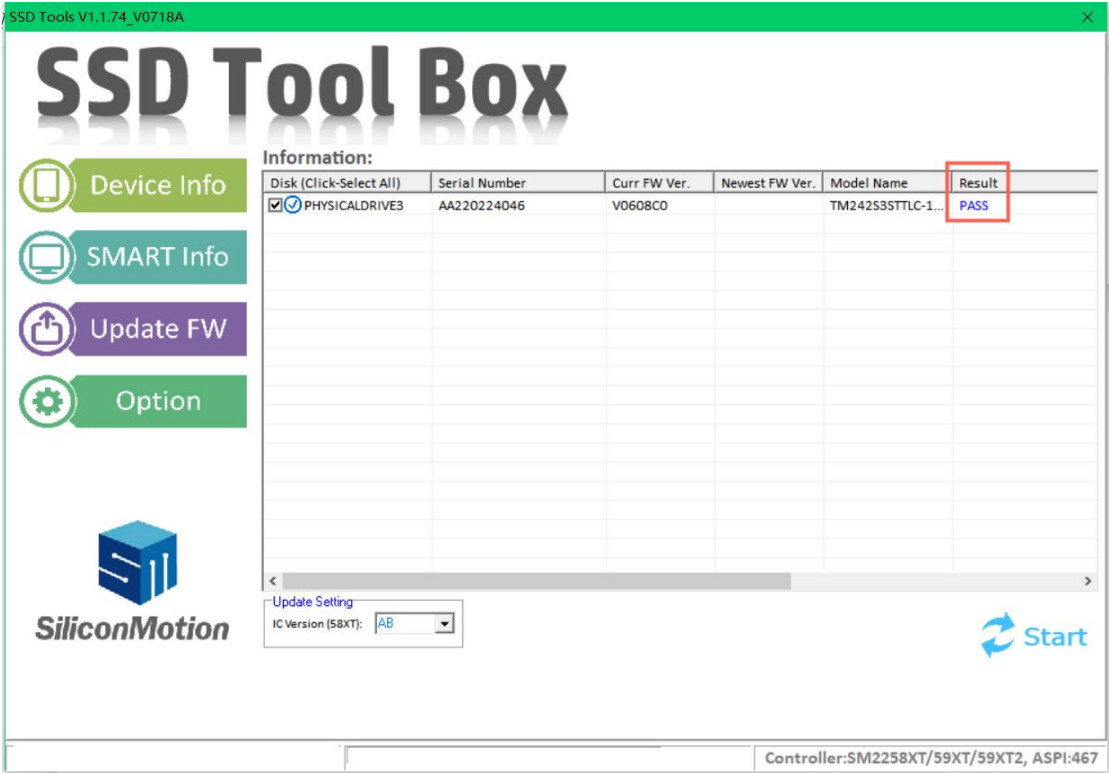


Step 5:Click “是(Y)”,The dialog box will pop up again,Then click "yes".

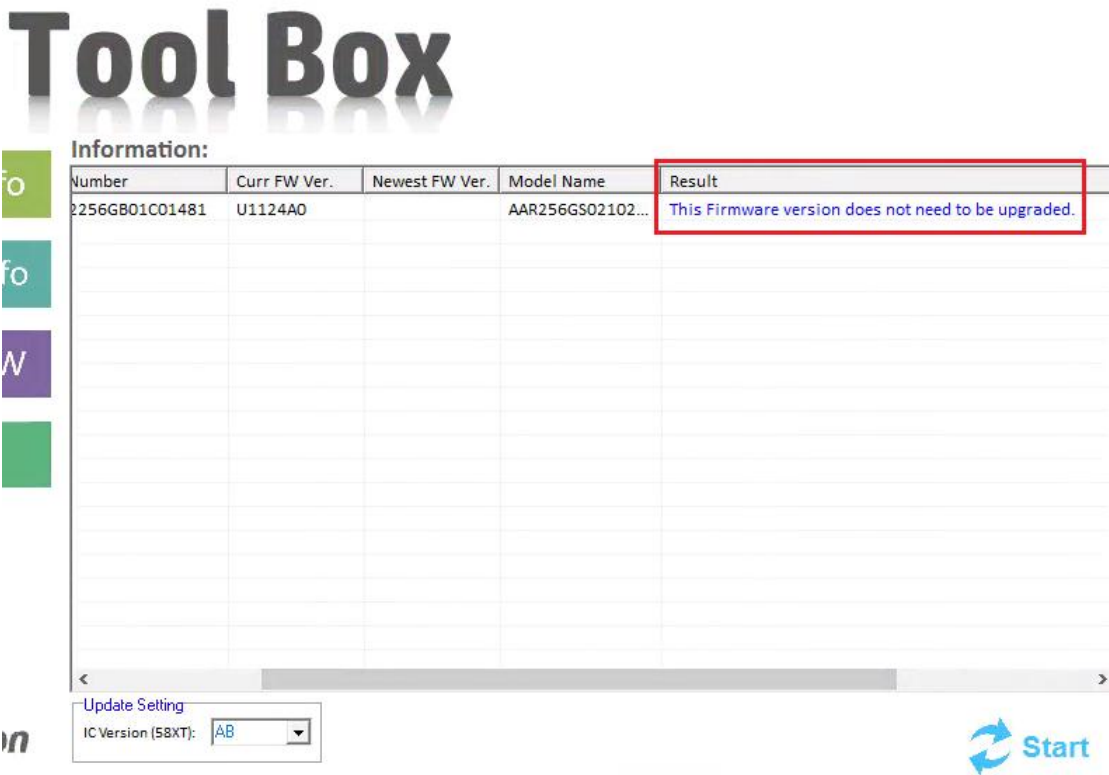
SSD Tools V1.1.74_V0718A



"Pass" will be displayed if the upgrade is successful.**Will not destroy data.**



If prompted "this firmware version does not need to be upgraded", Please skip to the second method.



2.Upgrade using MPTool

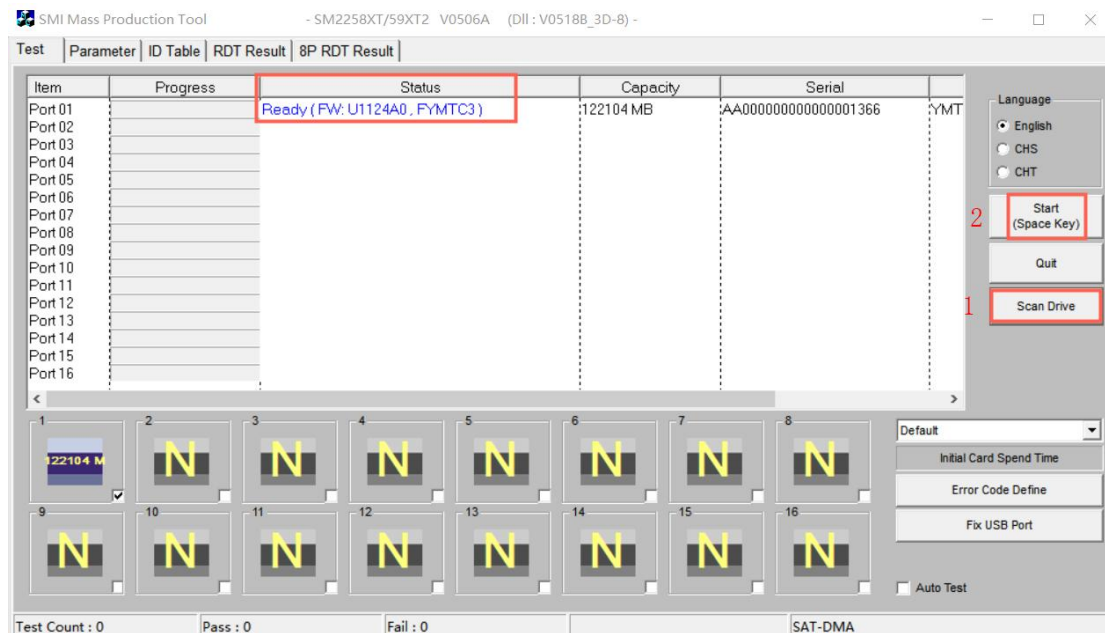
Step 1:First, copy important data from the problem disk, because using mptool upgrade will completely empty the data.

Step 2:Prepare a good SSD as the system disk(Preferably windows professional).The SSD that needs to be upgraded is powered on as the data slave disk.

Step 3:Open MPTool(SM2258XTMPToolV0506A)

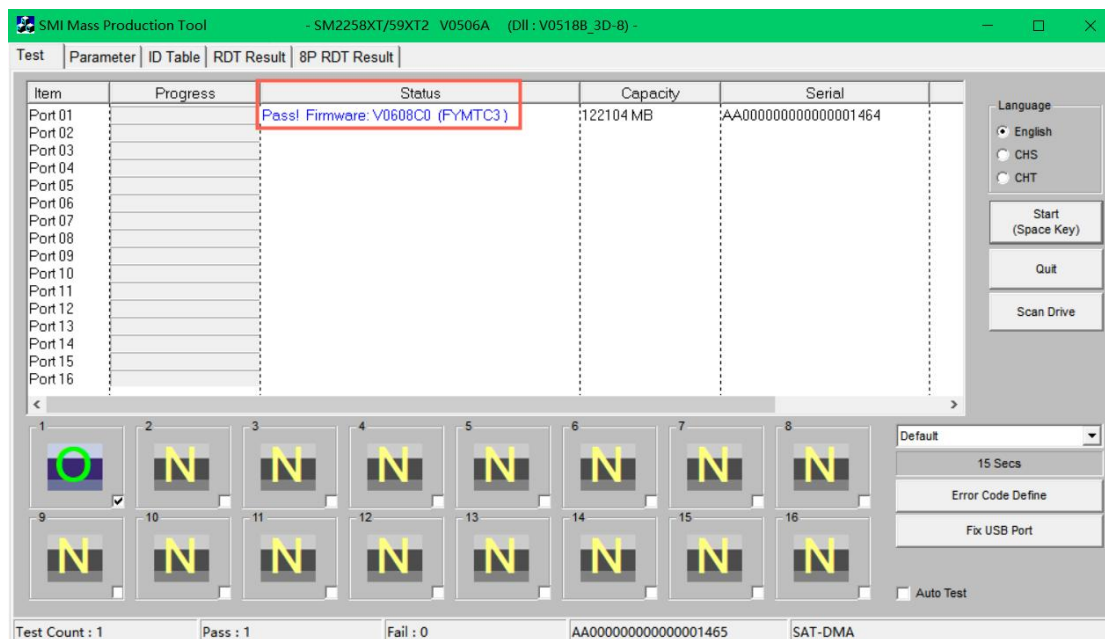
SM2259XT2_FYMTc_TAS_PkgV0609B_FWV0608C0 >		▼	🔄	在 SM2259XT2_FYMTc_TA...	
名称	修改日期	类型	大小		
Config	2022/6/9 11:26	文件夹			
Dll	2022/6/9 11:26	文件夹			
DriveSetting	2022/6/9 11:26	文件夹			
Firmware	2022/6/9 11:26	文件夹			
FlashDB	2022/6/9 11:26	文件夹			
Linux File	2022/6/9 11:26	文件夹			
Log file	2022/8/5 9:46	文件夹			
RDT File	2022/6/9 11:26	文件夹			
Report	2022/8/5 9:45	文件夹			
Tables	2022/6/9 11:26	文件夹			
UFD_MP	2022/6/9 11:26	文件夹			
default	2022/8/5 9:46	配置设置	5 KB		
ErrorCode	2018/10/29 14:07	文本文档	16 KB		
name	2022/6/13 10:25	文本文档	1 KB		
paramtable.bin	2021/3/19 14:40	BIN 文件	1 KB		
SM2258XTMPToolV0506A	2022/5/6 9:50	应用程序	2,453 KB		

Step 4: Click "Scan Drive", Click "Start" after SSD is detected.



"Pass" will be prompted when the upgrade is successful.

FW version becomes V0608C0.



Note: If MPTool does not recognize SSD.

a. Right click my computer

b. Click "manage(G)"

c. Click "Disk management"

d. Then right-click the SSD capacity to be upgraded

e. Click "offline(O)"



f. At this time, the disk will be offline.



g. Return to the mptool interface and perform step 3.